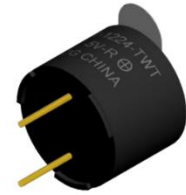




# PUIaudio



Data Sheet	AT-1224-TWT-5V-R
------------	------------------

**Features:**

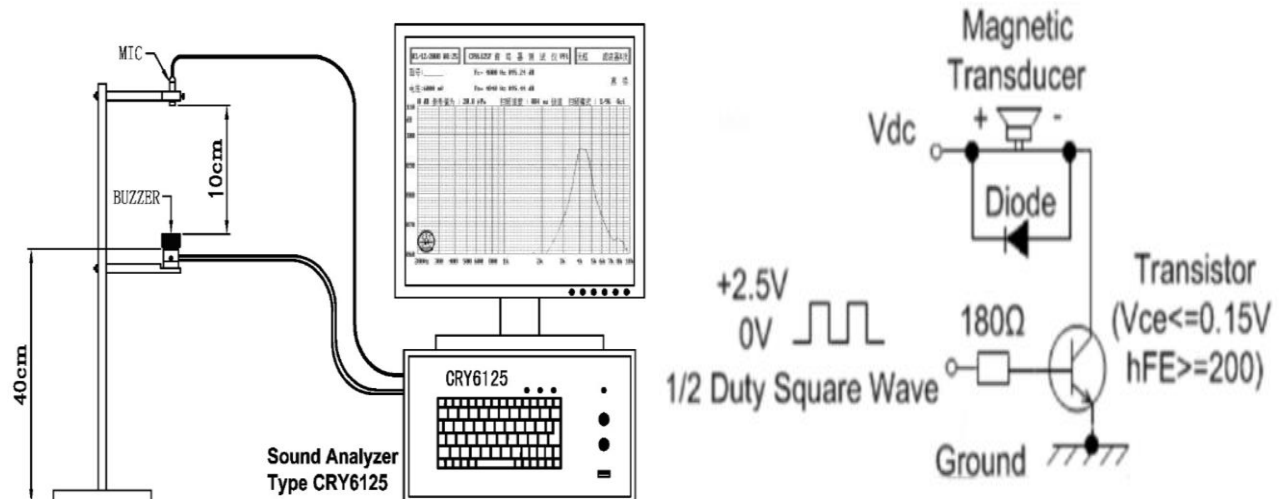
- 5V0-pk, 2400 Hz Magnetic Transducer
- Pin Type
- Wave Solder and Washing Allowed

**Specifications**

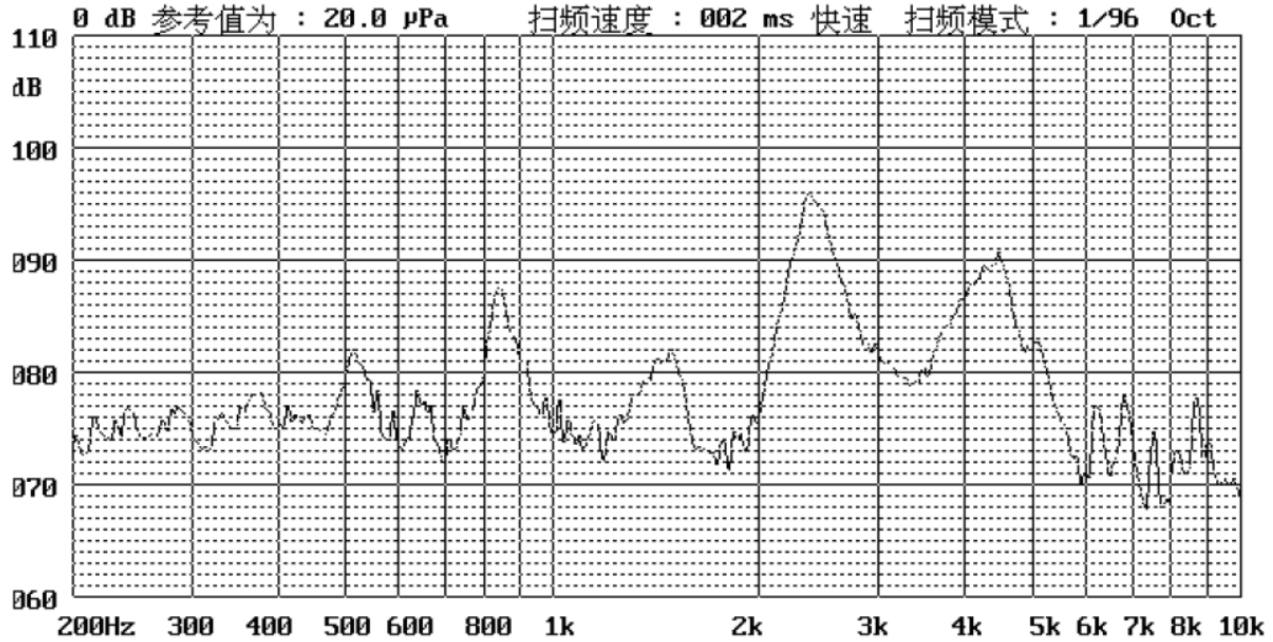
Parameters	Values	Units
Rated Voltage	5	V0-p
Operating Voltage Range	3 ~ 7	V0-p
Current Draw at Rated Voltage	50(Max.)	mA
Coil Resistance	47 ± 7	Ohms
Minimum SPL @ 10cm	85	dBA
Resonant Frequency	2,400 ± 500	Hz
Housing Material	PBT	-
Terminal Material	Au Plated Brass	-
Weight	2	Grams
Acceptable Soldering Methods	Hand Solder, Wave Solder	-
Environmental Compliances	RoHS/REACH	-
Storage Temperature	-30 ~ +80	°C
Operating Temperature	-20 ~ +70	°C

**Measurement Method** (Temperature: 25±3°C; Relative Humidity: 60% ~ 70%)

Standard Test Fixture (Distance: 10cm, 5V0-p, 2400Hz square wave)



## Typical Response Curve

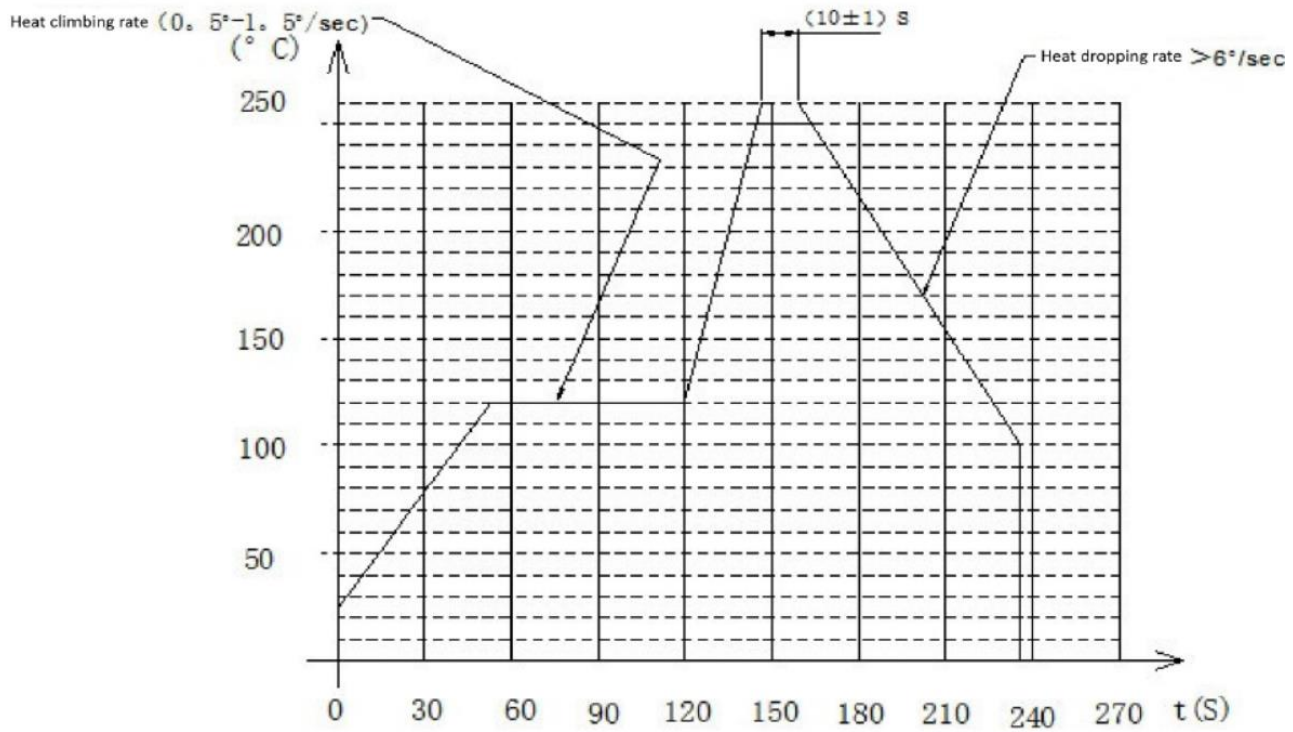


## Reliability Testing

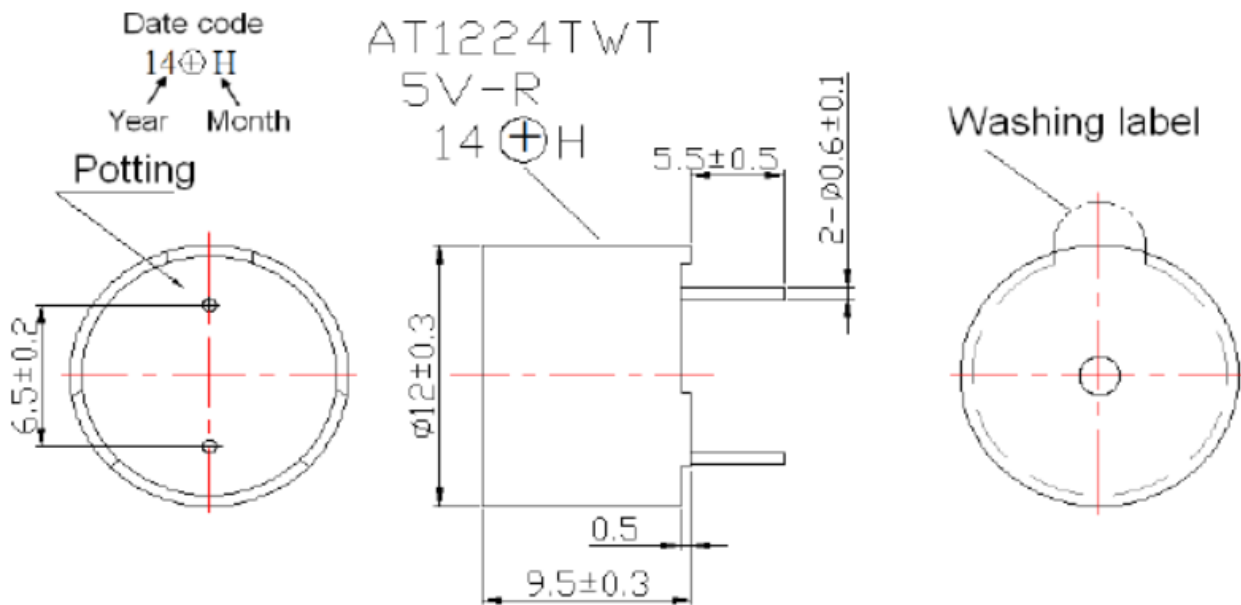
Type of Test	Test Specifications
High Temperature Test	96 hours at 80°C. Rest for 2 hours at normal condition.
Low Temperature Test	96 hours at -30°C. Rest for 2 hours at normal condition.
Humidity Test	96 hours at 40°C with relative humidity at X90-95%. Rest for 2 hours.
Temperature Cycle Testing	Complete 5 cycles of the test shown below; 
Vibration Test	Apply vibration amplitude of 1.5mm with 10-55Hz band of vibration in each XYZ direction for 2 hours.
Drop Test	Drop from height of 75cm onto 4cm thick hardwood board.

After tests, part shall be within  $\pm 10$ dB of stated SPL value.

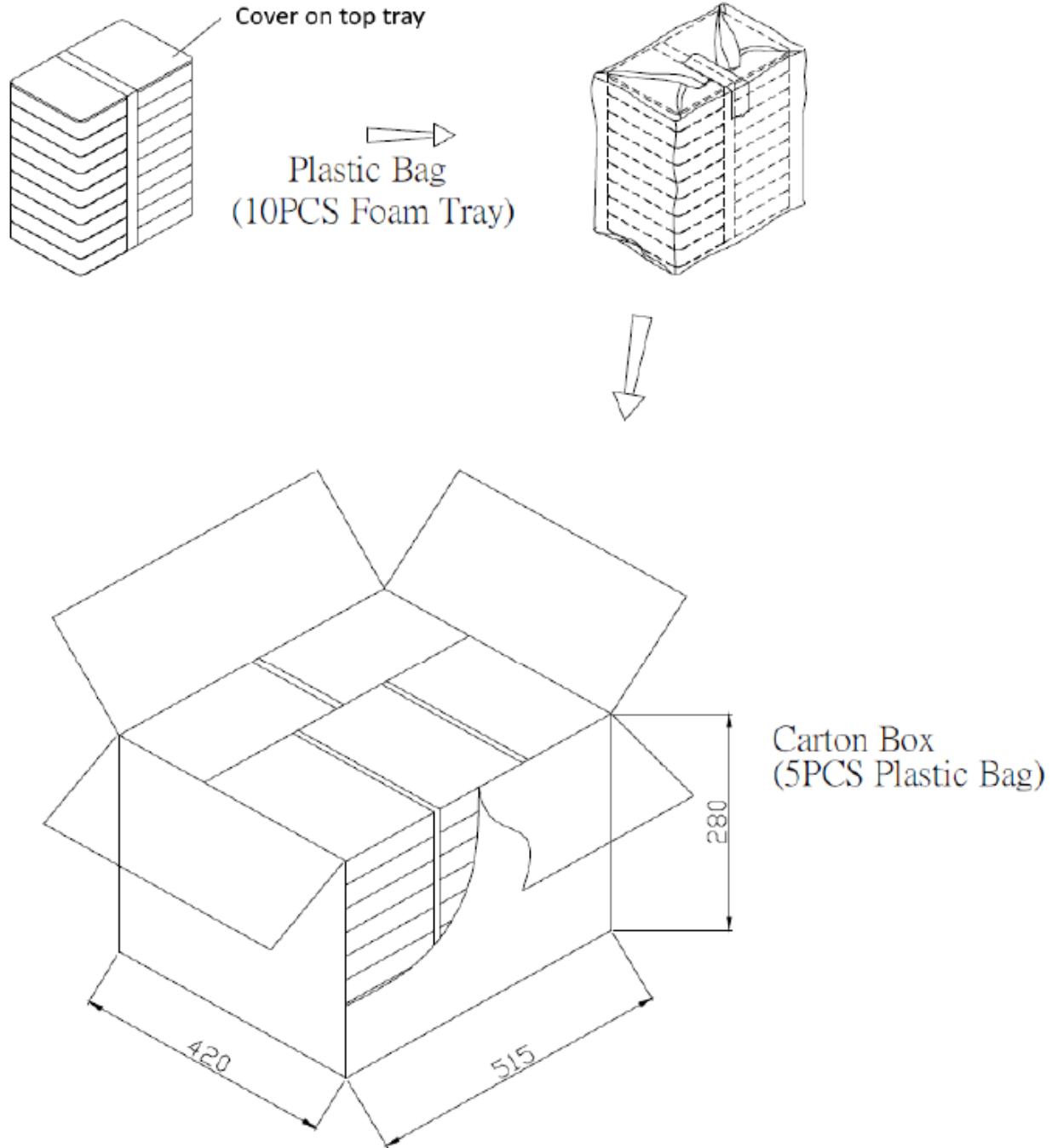
## Recommended Wave Solder Profile



## Dimensions



## Packaging



Foam Tray	240mmx160mm	1x100PCS=50PCS
Plastic Bag		10x100PCS=1000PCS
Carton Box	420mmx515mmx280mm	5x1000PCS=5000PCS

**Specification Revisions**

<b>Revision</b>	<b>Description</b>	<b>Date</b>	<b>Approved</b>
-	RELEASED FROM ENGINEERING	07/24/2014	-
A	CHANGE VOLTAGE FROM VPP TO VPK UPDATED ROHS	05/16/2019	ML
B	Update Spec Format, Add Details for Reliability, Packaging, etc.	10/24/2024	ML

Note:

1. Unless otherwise specified:
  - A. All dimensions are in millimeters.
  - B. Default tolerances are  $\pm 0.5\text{mm}$  and angles are  $\pm 3^\circ$ .
2. Specifications subject to change or withdrawal without notice.