



PUI audio



Data Sheet

AT-2440-TWT-R

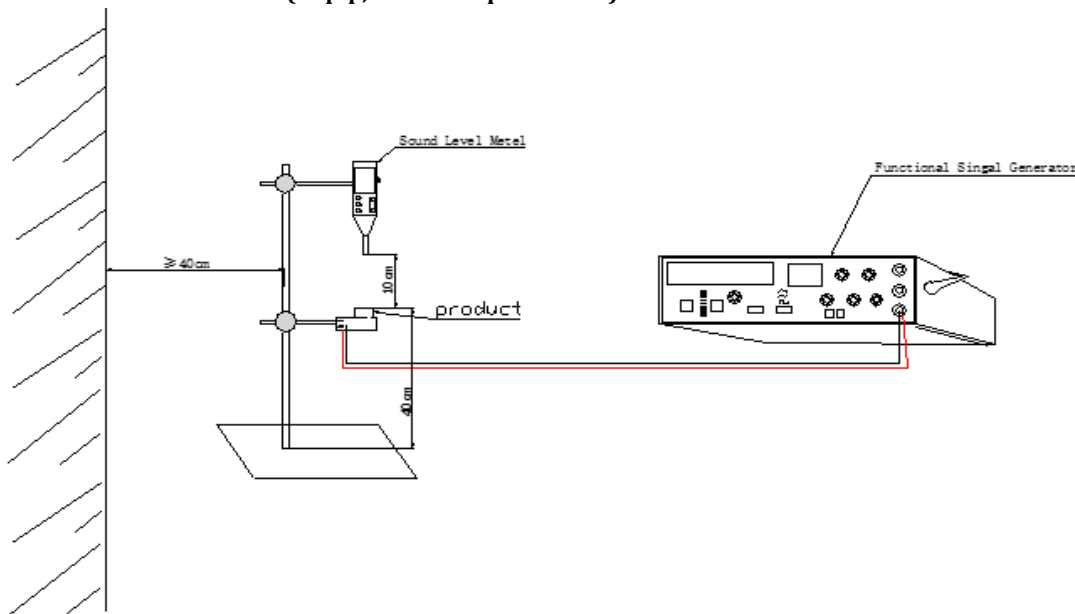
Features:

- Piezo Transducer
- 3Vp-p rated, 4000Hz
- Wash Solder and Washing Allowed

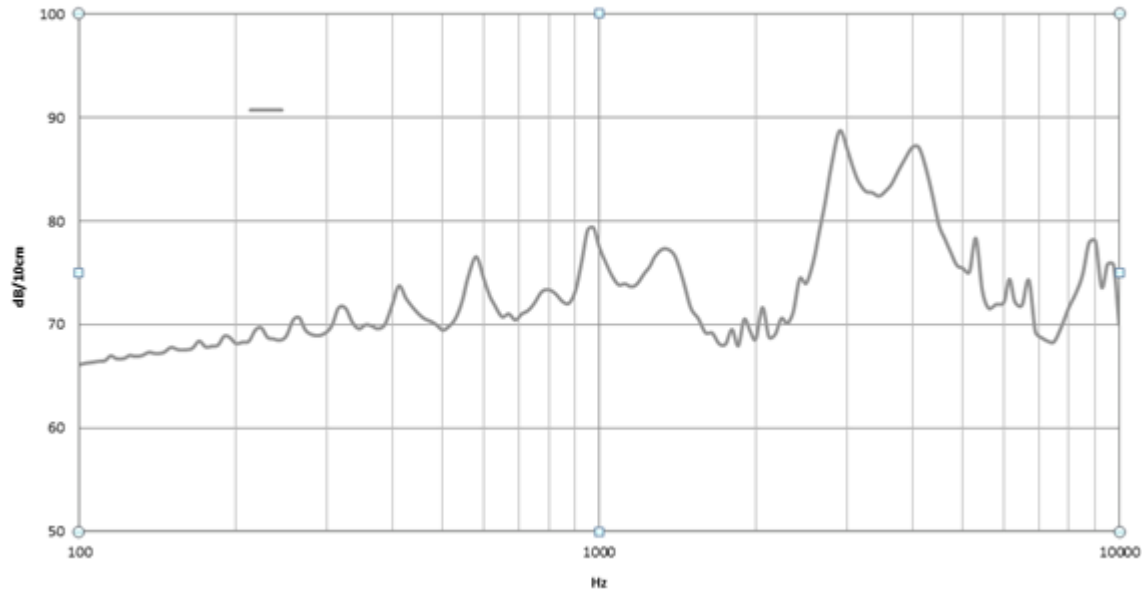
Specifications

Parameters	Values	Units
Rated Voltage	3	Vp-p
Operating Voltage Range	1 ~ 30	Vp-p
Current Draw at Rated Voltage	1(Max.)	mA
Capacitance at 120Hz	21,000 ± 30%	pF
Minimum SPL @ 10cm	80	dBA
Resonant Frequency	4,000 ± 500	Hz
Housing Material	Noryl	-
Terminal Material	Sn Plated Red Copper	-
Weight	3	Grams
Acceptable Soldering Methods	Hand Solder	-
Environmental Compliances	ROHS/REACH	Exemption 7c-1
Moisture Sensitivity Level	-	-
Storage Temperature	-30 to 70	°C
Operating Temperature	-20 to 60	°C

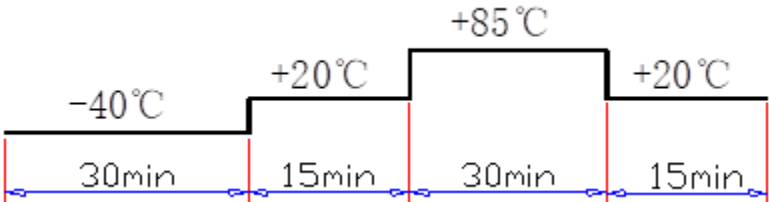
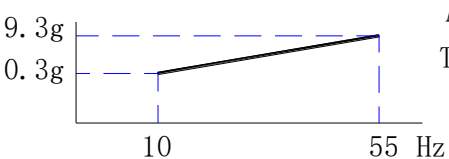
Measurement Method (3Vp-p, 4000 Hz square wave)



Typical Frequency Response (3Vp-p, 4000 Hz square wave)

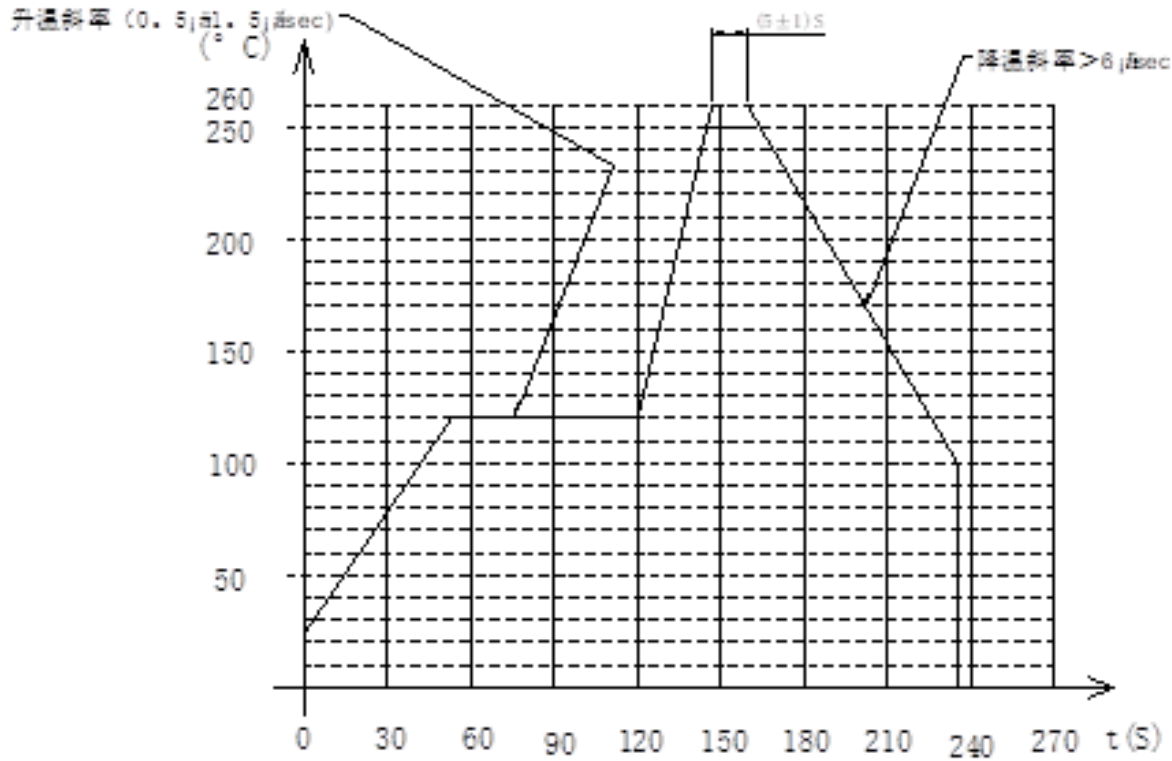


Reliability Testing

Type of Test	Test Specifications
High Temperature Test	Storage in $+85^{\circ}\text{C} \pm 2^{\circ}\text{C}$ test box for 96 hours, then expose to the room temperature for 2 hours without applying power.
Low Temperature Test	Storage in $-40^{\circ}\text{C} \pm 2^{\circ}\text{C}$ test box for 96 hours, then expose to the room temperature for 2 hours without applying power.
Humidity Test	Storage in $+40^{\circ}\text{C} \pm 2^{\circ}\text{C}$ 90-95%RH test box for 96 hours, then expose to the room temperature for 2 hours without applying power.
Temperature Cycle Testing	 <p>Make this test for 5 cycles without applying power, then expose to the room temperature for 2 hours.</p>
Vibration Test	 <p>Amplitude: 1.5mm Time : 1min/axis</p> <p>Make this test for the directions of X,Y,Z for 2 hours each (total 6 hours).</p>
Drop Test	Free drop a unit from the height 70cm to the surface of 10mm thick board ,three directions(X,Y,Z).

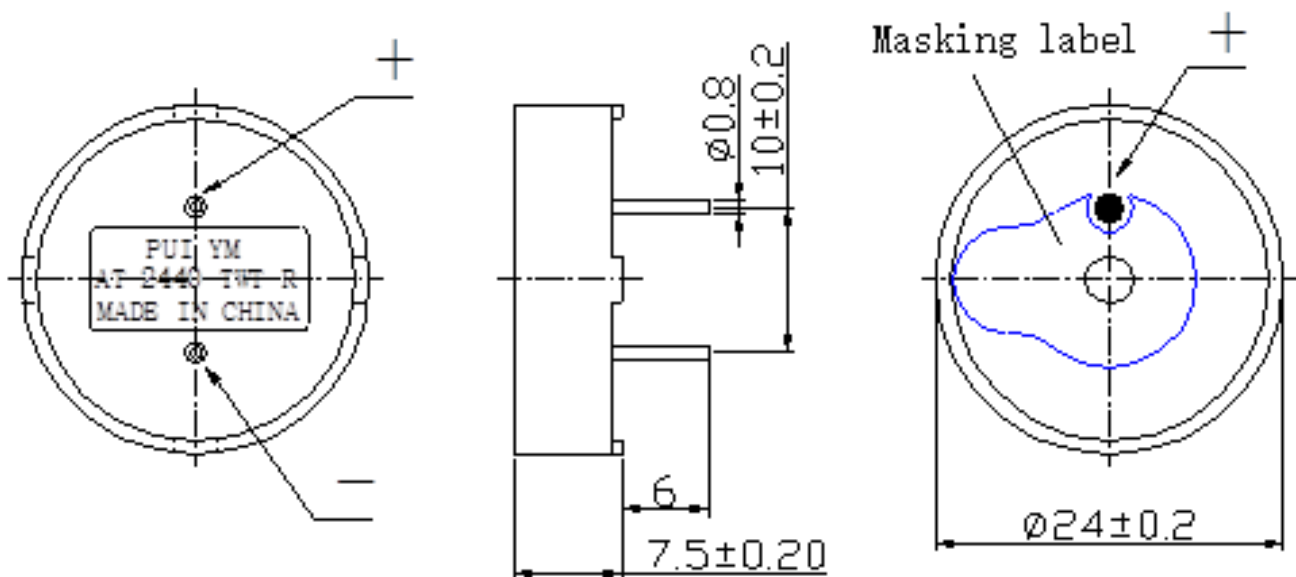
After tests, the SPL shall be within $\pm 5\text{dB}$ of stated value.

Recommended Wave Solder Profile

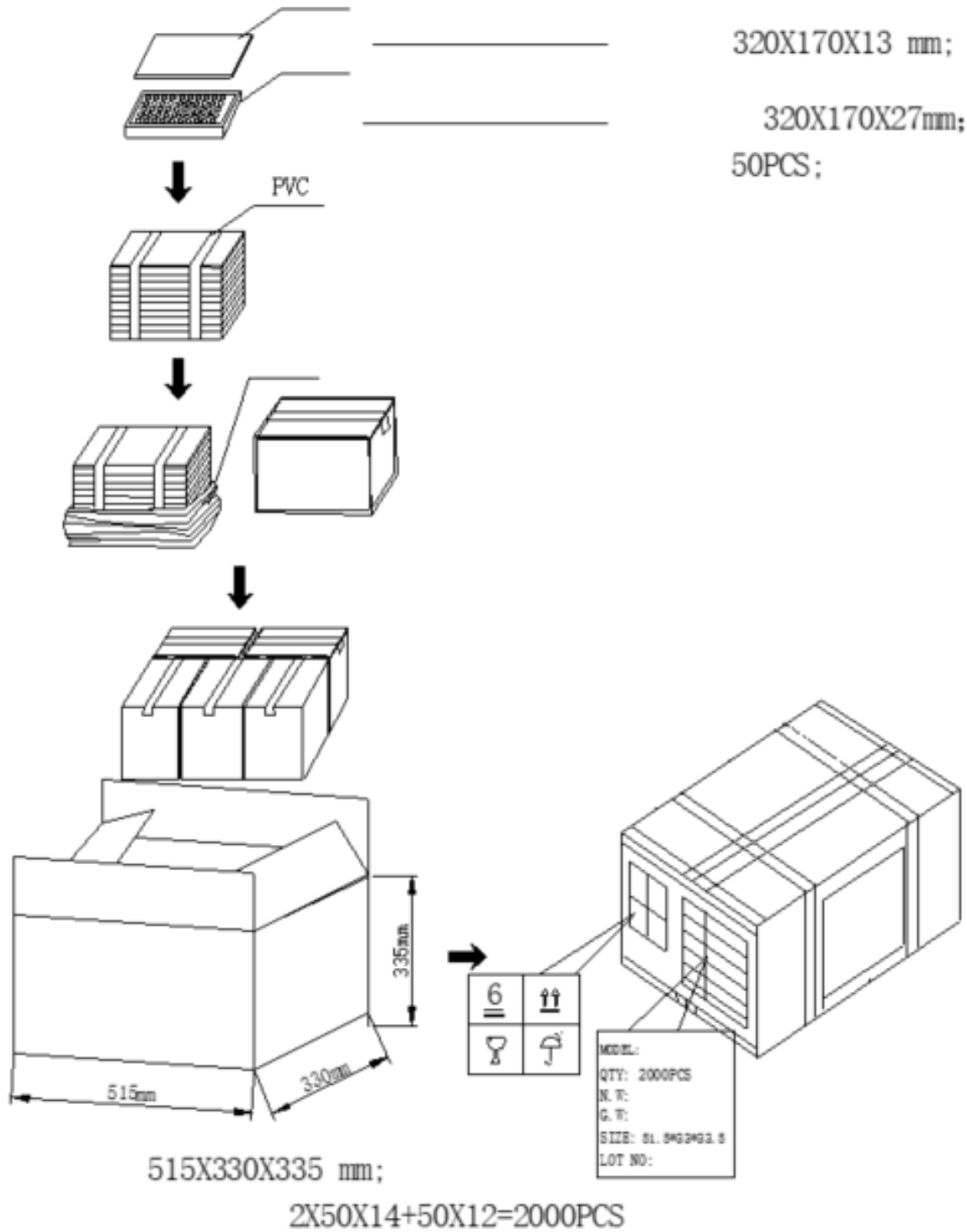


波峰焊曲线图

Dimensions



Packaging



Specification Revisions

Revision	Description	Date	Approved
-	RELEASED FROM ENGINEERING	08/19/2004	-
A	REVISED DRAWING TITLE	08/23/2004	RW
B	REMOVED LEAD FREE ADDED RoHS NOTE	08/10/2005	-
C	REVISED POSITIVE TERMINAL INDICATOR	12/12/2007	RW
D	REVISED TERMINAL MATERIAL	11/06/2008	BR
E	REVISED TO INVENTOR 3D DRAWING TEMPLATE	11/11/2008	BR
F	Update Spec Format, Add Details for Reliability, Packaging, Etc.	10/24/2024	ML

Note:

1. Unless otherwise specified:
 - A. All dimensions are in millimeters.
 - B. Default tolerances are $\pm 0.5\text{mm}$ and angles are $\pm 3^\circ$.
2. Specifications subject to change or withdrawal without notice.