



# PUI audio



Data Sheet

AT-3425-TWT-R

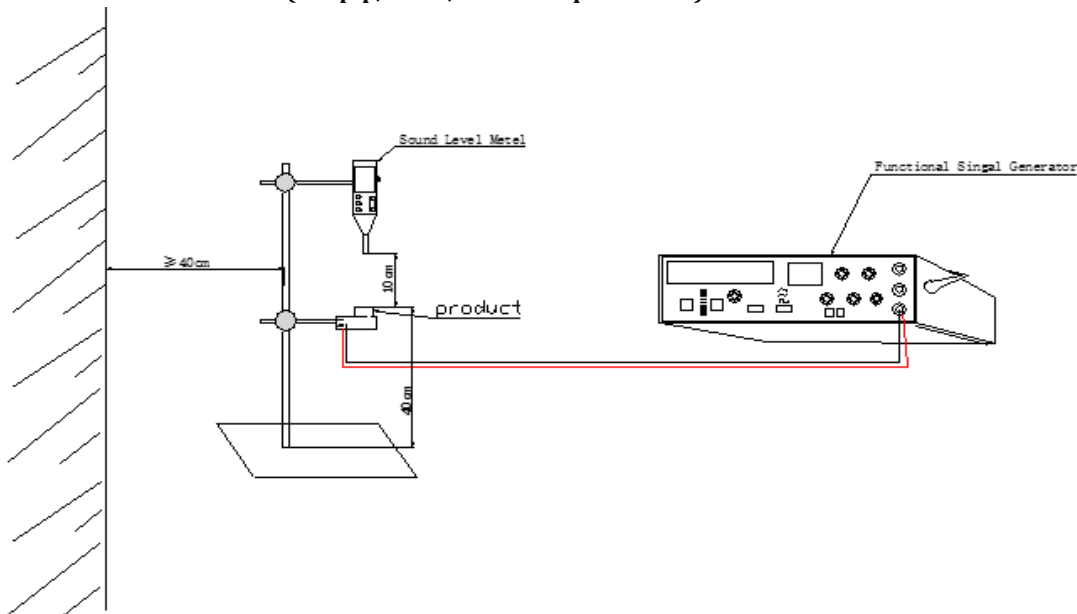
## Features:

- Piezo Transducer
- 12Vp-p rated, 2500Hz
- Washing Allowed

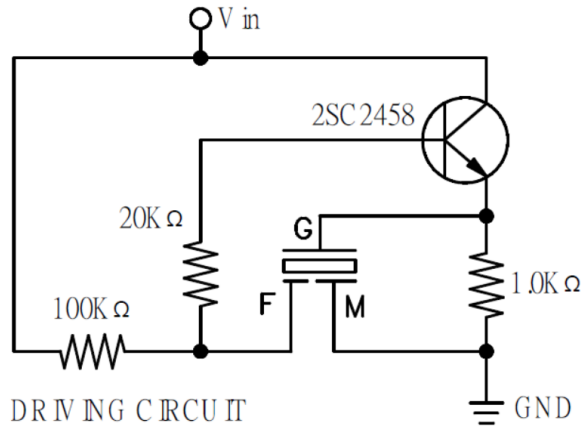
## Specifications

Parameters	Values	Units
Rated Voltage	12	Vp-p
Operating Voltage Range	3 ~ 28	Vp-p
Current Draw at Rated Voltage	7	mA
Capacitance at 120Hz	21,000 ± 30%	pF
Minimum SPL @ 10cm	85	dBA
Minimum SPL @ 30cm	75	dBA
Resonant Frequency	2500 ± 500	Hz
Housing Material	UL94 ABS	-
Terminal Material	Au Plated Phosphor Bronze	-
Weight	3.7	Grams
Acceptable Soldering Methods	Hand Solder	-
Environmental Compliances	ROHS/REACH	Exemption 7c-1
Storage Temperature	-40 ~ +95	°C
Operating Temperature	-30 ~ +85	°C

## Measurement Method (12Vp-p, 10cm, 2500 Hz square wave)



## Basic Drive Circuit (Testing Only)

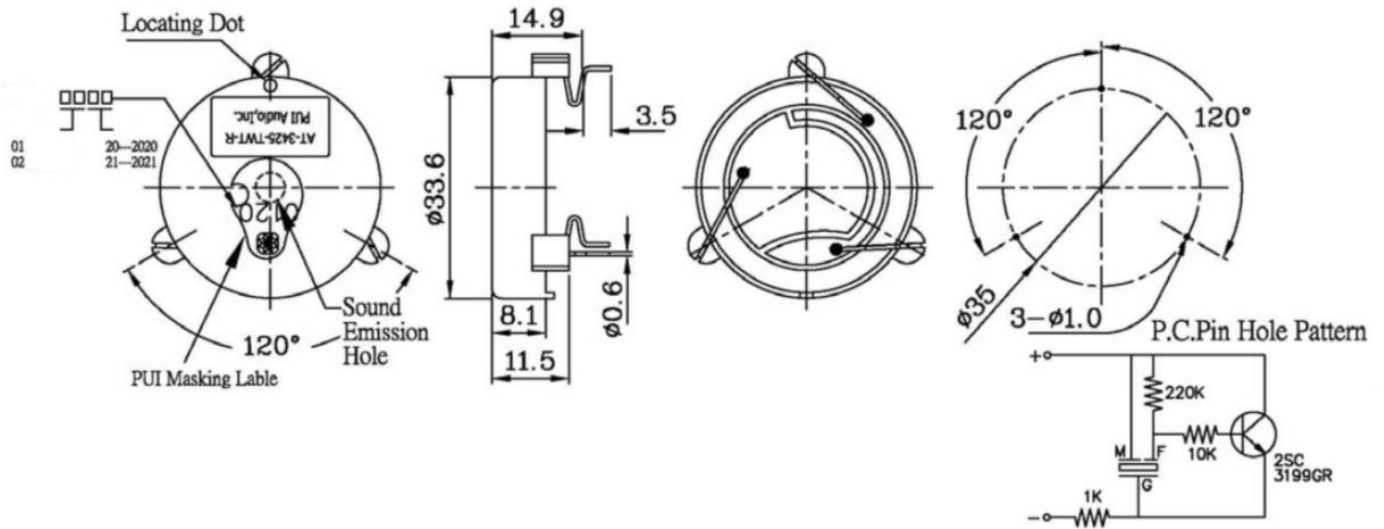


## Reliability Testing

Type of Test	Test Specifications
High Temperature Test	Placed in chamber at +95°C for 240 hours, then rested at +25°C for 4 hours.
Low Temperature Test	Placed in chamber at -40°C for 240 hours, then rested at +25°C for 4 hours.
Humidity Test	Placed in chamber at +40°C & 90±5% RH for 240 hours, then rested at +25°C for 4 hours
Temperature Cycle Testing	<p>Part subjected to 5 cycles of test, then rested at +25°C for 4 hours.</p>
Vibration Test	Vibration applied with amplitude of 1.5mm and 10 ~ 55Hz band of vibration frequency to each direction (X, Y, Z) for 2 hours each (6 hours total).
Drop Test	Free drop a unit from the height 75cm to the surface of 40mm thick wooden board, 3 times in each direction (X, Y, Z) (9 times total).
Continuous Life Test	48 hours continuous operation at +70°C with rated voltage applied.
Intermittent Life Test	Duty cycle of 1 minute on, 1 minute off, minimum of 5000 times at +25±2°C with rated voltage applied.

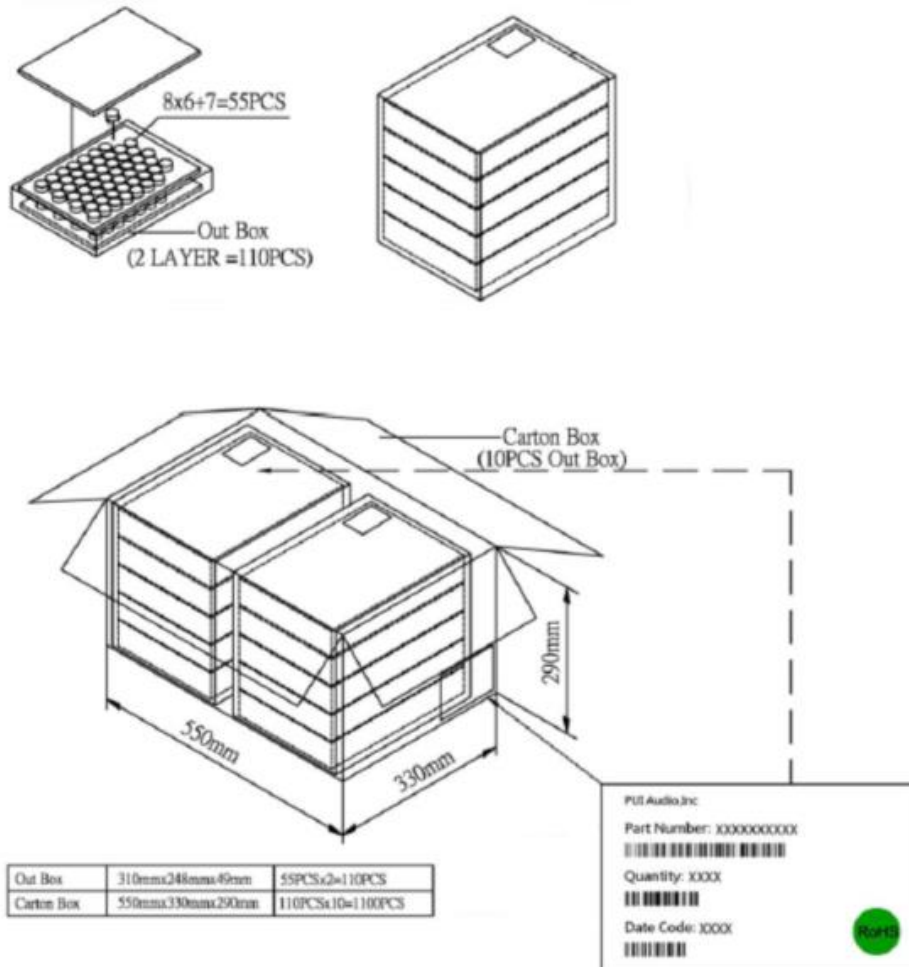
**Parts pass after tests, values shall be within ±10% of original ones. SPL shall be within ±10dB.**

## Dimensions



Tolerances  $\pm 0.5\text{mm}$  unless otherwise noted.

## Packaging



### Specification Revisions

Revision	Description	Date	Approved
-	RELEASED FROM ENGINEERING	09/12/2005	-
A	REVISED FEEDBACK LOOP	01/02/2008	RW
B	REVISED TO INVENTOR 3D DRAWING TEMPLATE	10/03/2008	BR
C	REVISED WEIGHT	02/27/2020	MV
D	Update Spec Format, Add Details for Reliability, Packaging, etc.	11/12/2024	ML

Note:

1. Unless otherwise specified:
  - A. All dimensions are in millimeters.
  - B. Default tolerances are  $\pm 0.5\text{mm}$  and angles are  $\pm 3^\circ$ .
2. Specifications subject to change or withdrawal without notice