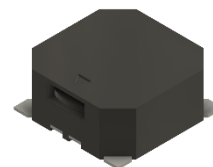




PUI audio



Data Sheet

SMI-0927-S-3V

Features:

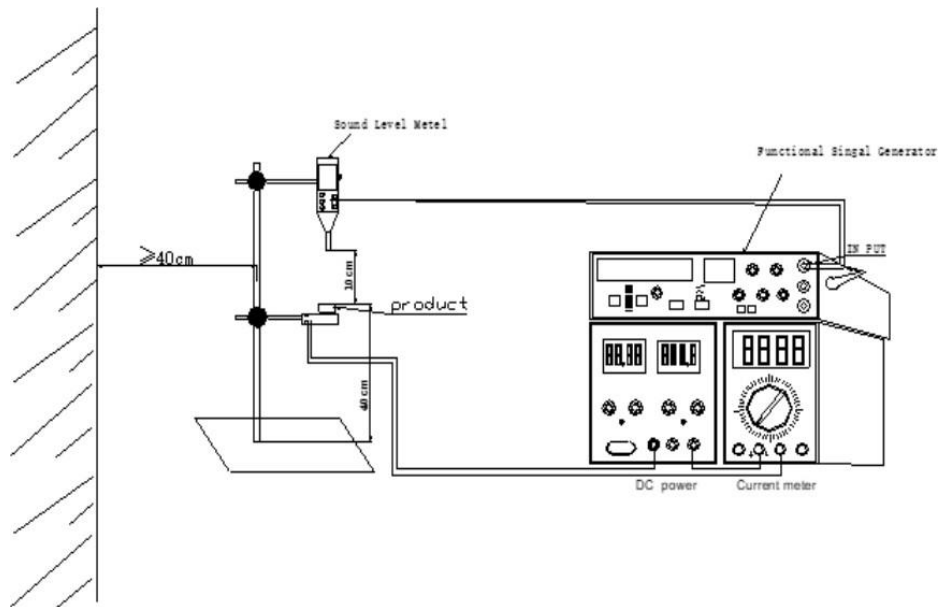
- 8.5X8.5mm Surface Mount Magnetic indicator with internal circuit
- 3Vdc with 40mA current draw
- 2700Hz tone for peak perception above ambient noise
- Wide -40°C to +85°C operating temperature range
- Reflowable but wash not allowed

Specifications

Parameters	Values	Units
Rated Voltage	3	VDC
Operating Voltage Range	2 ~ 5	VDC
Current Draw at Rated Voltage	≤40	mA
Minimum SPL @ 10cm	≥82	dBA
Resonant Frequency	2700	Hz
Housing Material	LCP (Black)	-
Terminal Material	Brass(DSn)	-
Weight	0.8	Grams
Acceptable Soldering Methods	Hand Solder, Reflow Solder	See following pages for information
Environmental Compliances	RoHS/REACH	-
Storage Temperature	-40 ~ +85	°C
Operating Temperature	-40 ~ +85	°C

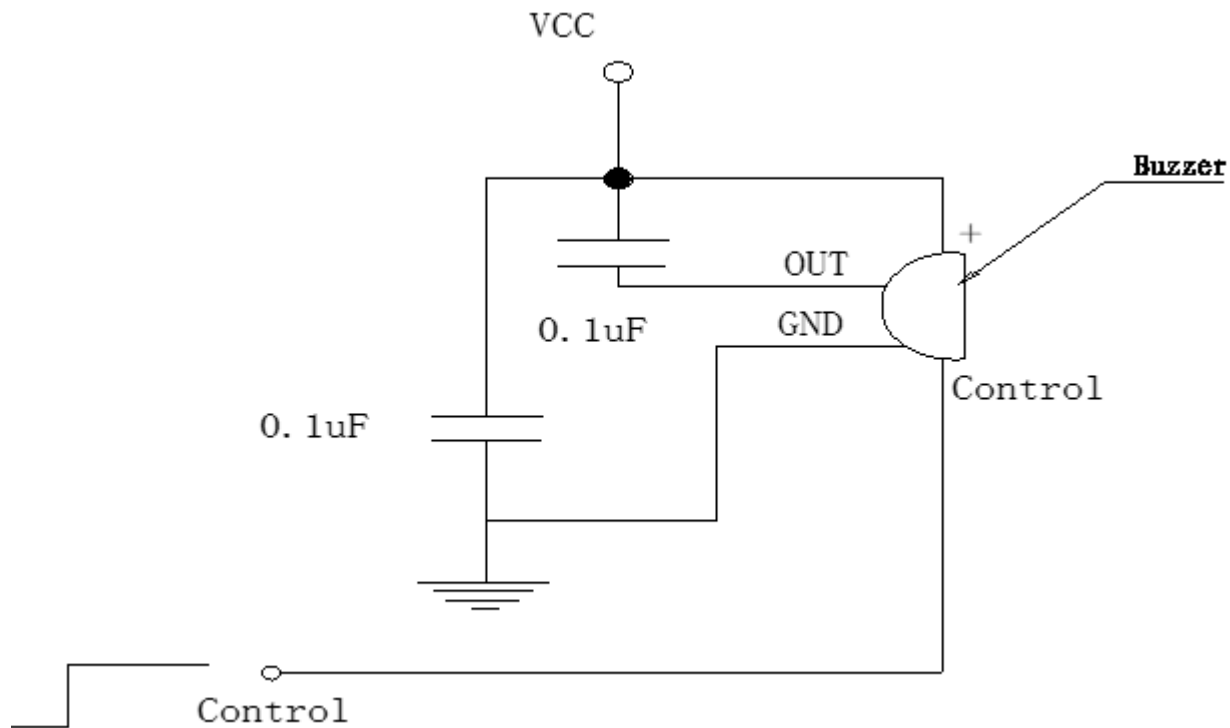
Measurement Method (Temperature: $25\pm 3^{\circ}\text{C}$; Relative Humidity: 60% ~ 70%)

Standard Test Fixture: (3Vdc, Distance=10cm)

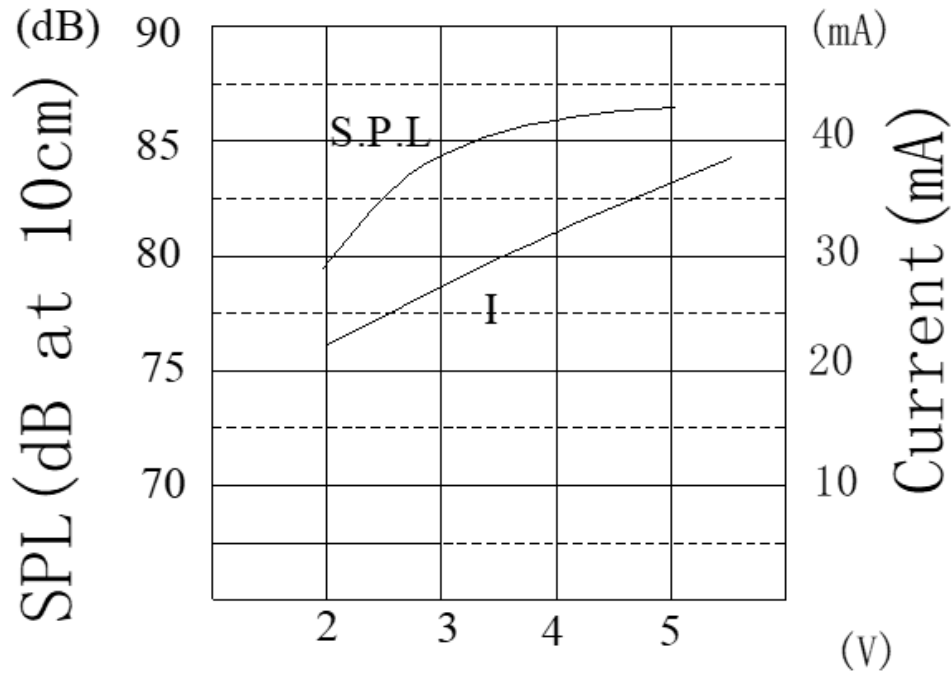


Test Circuit

Static electricity prevention is essential for both testing and operation.



SPL-voltage-Current Curve

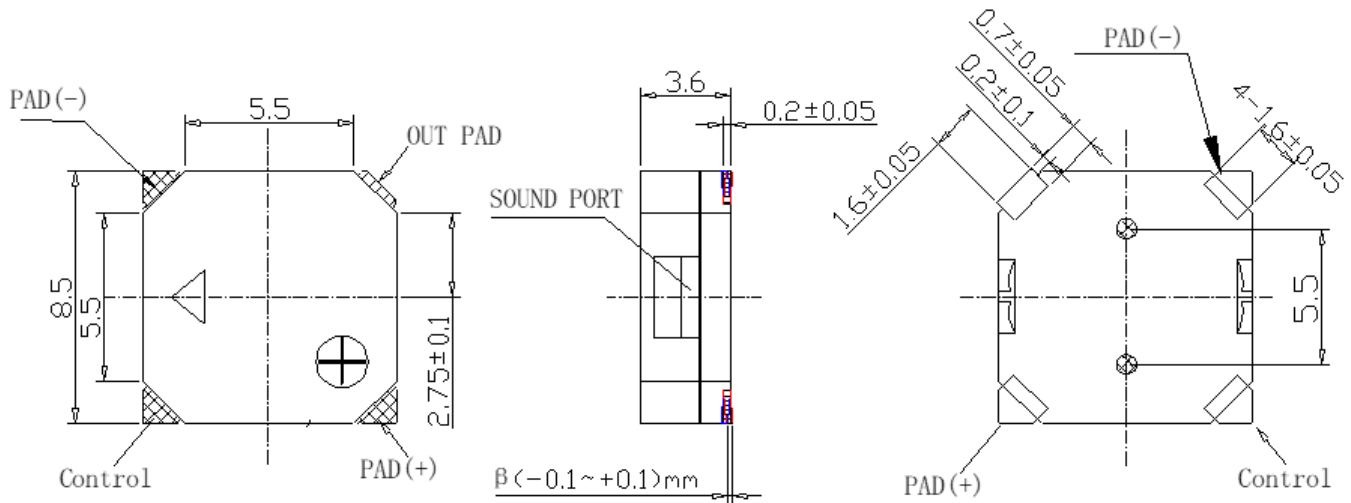


Reliability Testing

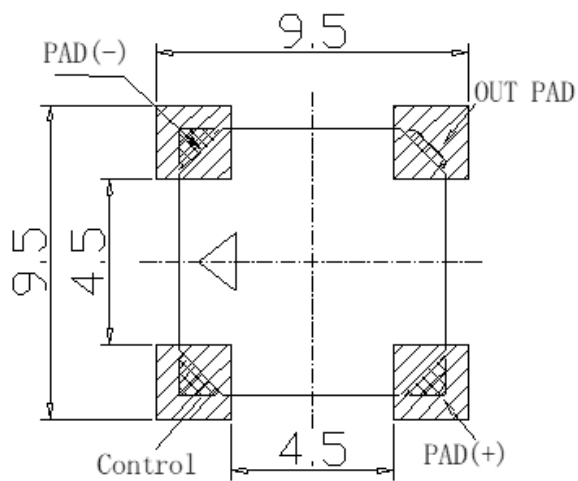
Type of Test	Test Specifications
Storage High Temperature Test	Storage in $+85^{\circ}\text{C}\pm 2^{\circ}\text{C}$ test box for 96 hours, then expose to the room temperature for 2 hours without applying power.
Storage Low Temperature Test	Storage in $-40^{\circ}\text{C}\pm 2^{\circ}\text{C}$ test box for 96 hours, then expose to the room temperature for 2 hours without applying power.
Humidity Test	Storage in $+40^{\circ}\text{C}\pm 2^{\circ}\text{C}$ 90-95%RH test box for 96 hours, then expose to the room temperature for 2 hours without applying power.
Temperature Cycle Testing	<p>Make this test for 5 cycles without applying power, then expose to the room temperature for 2 hours.</p>
Vibration Test	<p>Make this test for the directions of X, Y, Z for 2 hours each (total 6 hours).</p>
Drop Test	Free drop a unit from the height 100cm to the surface of 10mm thick board, three directions (X, Y, Z).
Solderability Test	Soldering temp.: $260\pm 5^{\circ}\text{C}$ Heat applying time: $3\pm 0.5\text{sec}$.

After these test, the SPL shall be $\pm 5\text{dB}$ of the initial value.

Dimensions

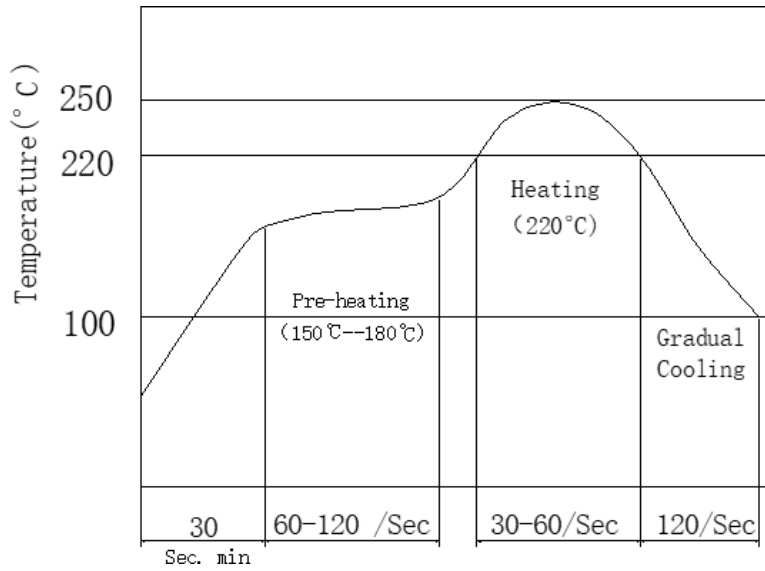


PCB Land Pattern

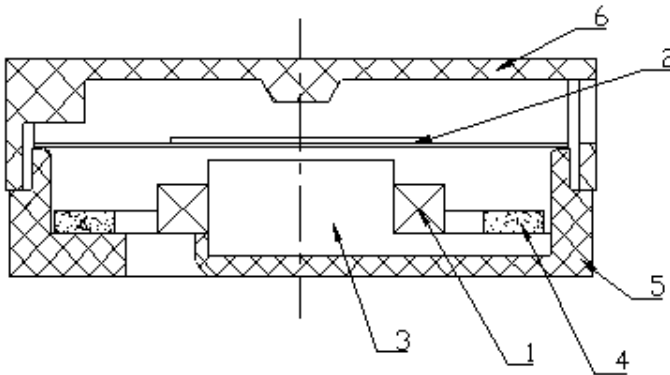


*This land pattern is advisory only and its use or adaptation is entirely voluntary. PUI Audio disclaims all liability of any kind associated with the use, application, or adaptation of this land pattern.

Recommended Reflow Soldering Procedure



Material



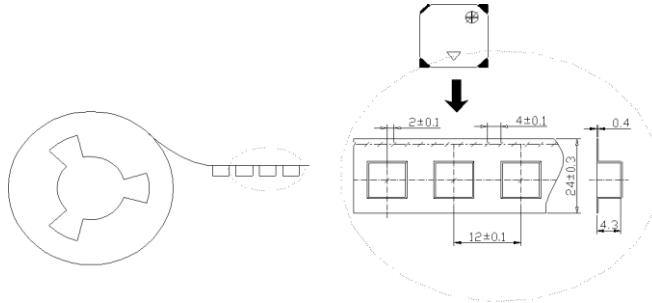
Part No.	Part Name	Q'TY	Material
6	Cover	1	LCP
5	Case	1	LCP
4	Magnet	1	Bonded NdFeB
3	Iron	1	Iron
2	Diaphragm	1	Iron
1	Coil Part	1	Copper Iron

ROHS 2.0

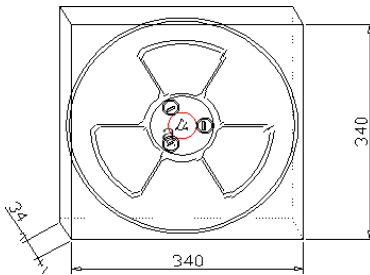
Cadmium (Cd) / Cadmium Compounds	< 100ppm
Lead (Pb) / Lead Compounds	< 800ppm
Mercury (Hg) / Mercury Compounds	< 800ppm
Hexavalent-Chromium (Cr6+) Compounds	< 800ppm
PBB	< 800ppm
PBDE	< 800ppm

Packaging

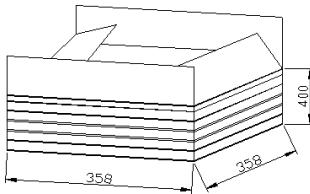
- 1000cps/Reel



- 1 Reel/ Inner Box



- 5000 pcs/ carton



Specifications Revisions

Revision	Description	Date	Approved
	Released from Engineering	12/04/2024	NK

Note:

1. Unless otherwise specified:
 - A. All dimensions are in millimeters.
 - B. Default tolerances are $\pm 0.5\text{mm}$ and angles are $\pm 3^\circ$.
2. Specifications subject to change or withdrawal without notice.