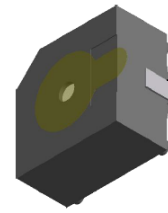




PUIaudio



Data Sheet

SMI-1324-TW-5V-5-R-T/R

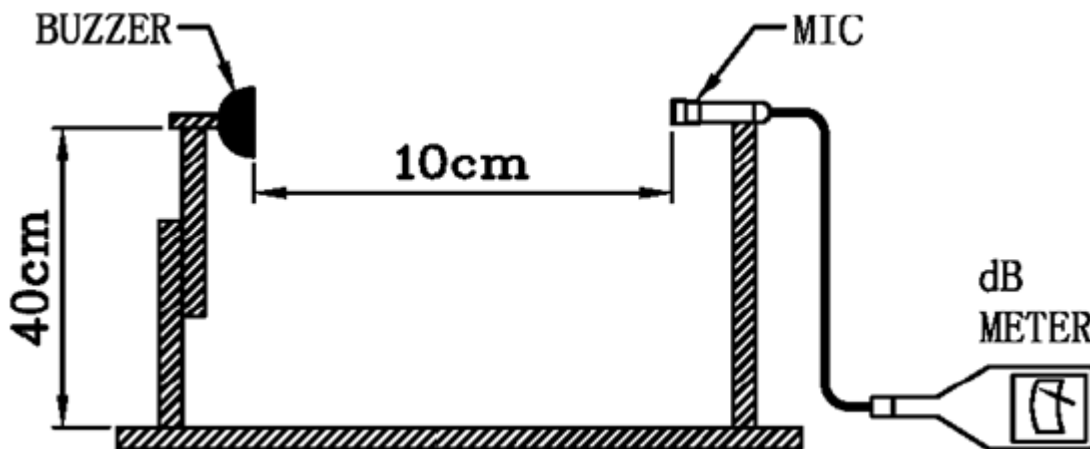
Features:

- 5Vdc Electro-Mechanical SMD Indicator
- 2400Hz Resonant Frequency
- Reflow and Wash Allowed

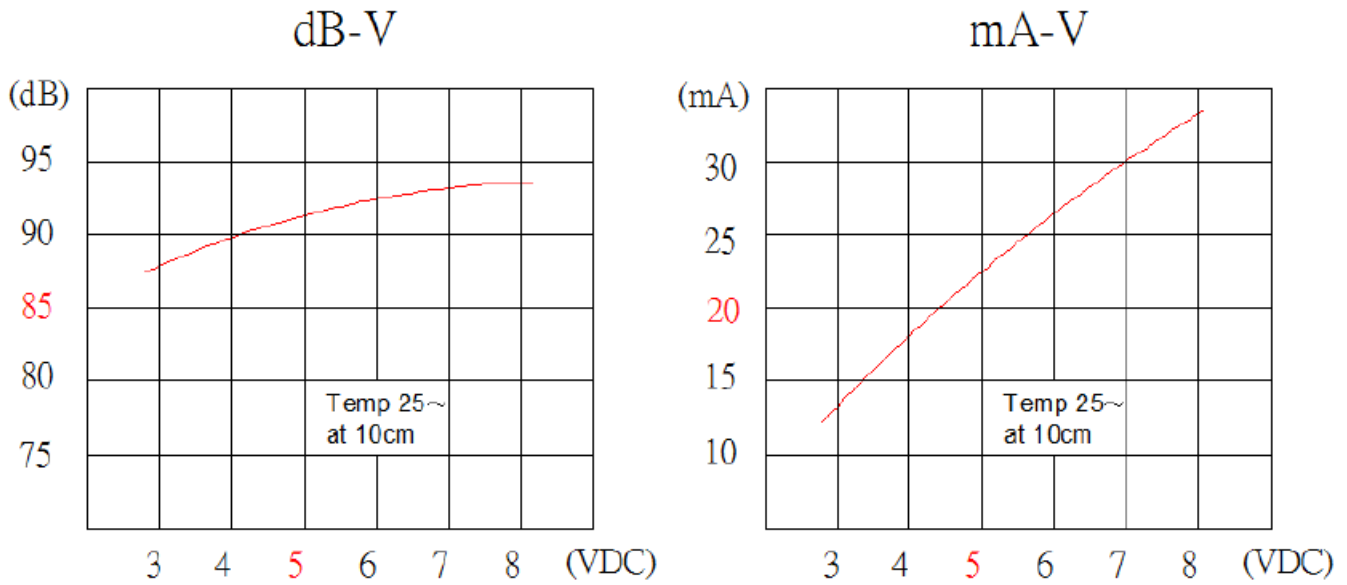
Specifications

Parameters	Values	Units
Rated Voltage	5	VDC
Operating Voltage Range	4 - 7	VDC
Current Draw at Rated Voltage	30(Max.)	mA
Minimum SPL @ 10cm	88	dBA
Resonant Frequency	2400 ± 300	Hz
Tone or Pulse Rate	Continuous Tone	-
Housing Material	PPS (Gray)	-
Terminal Material	Sn plated Brass	-
Weight	2.5	Grams
Acceptable Soldering Methods	Hand Solder, Reflow Solder	See following pages for details
Environmental Compliances	ROHS/REACH	-
Moisture Sensitivity Level (MSL)	2A	-
Storage Temperature	-30 to 80	°C
Operating Temperature	-20 to 70	°C

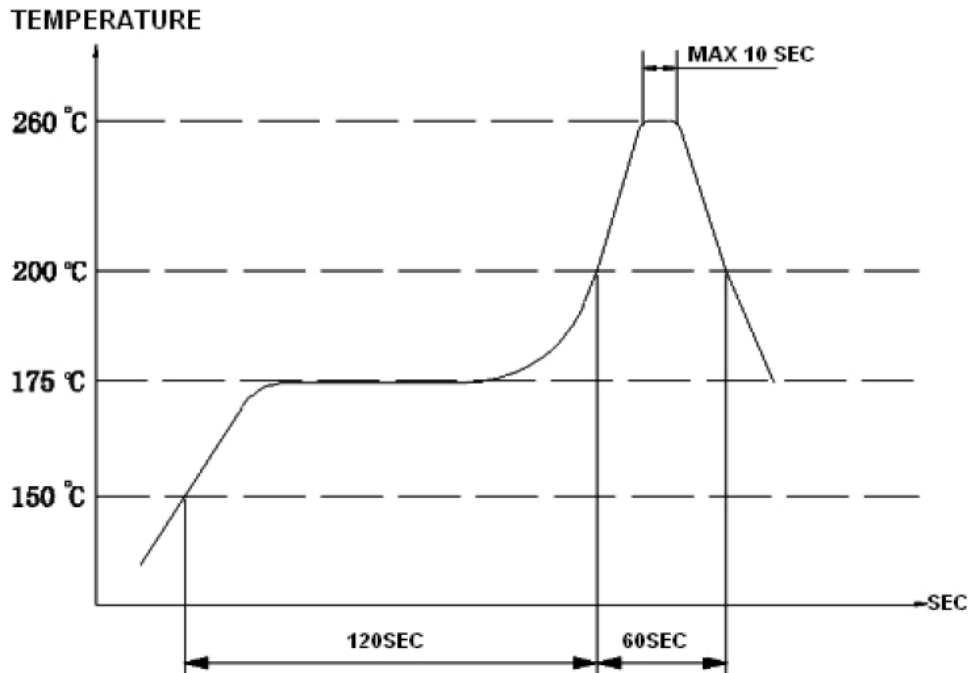
Measurement Method (5Vdc, 10cm)



Typical SPL vs Input Voltage

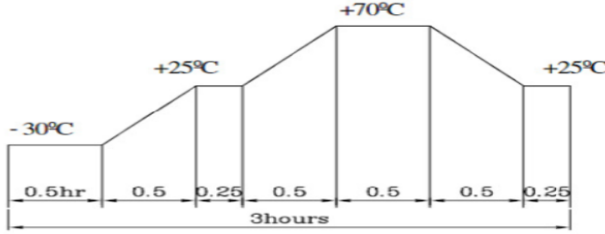


Recommended Soldering Procedure



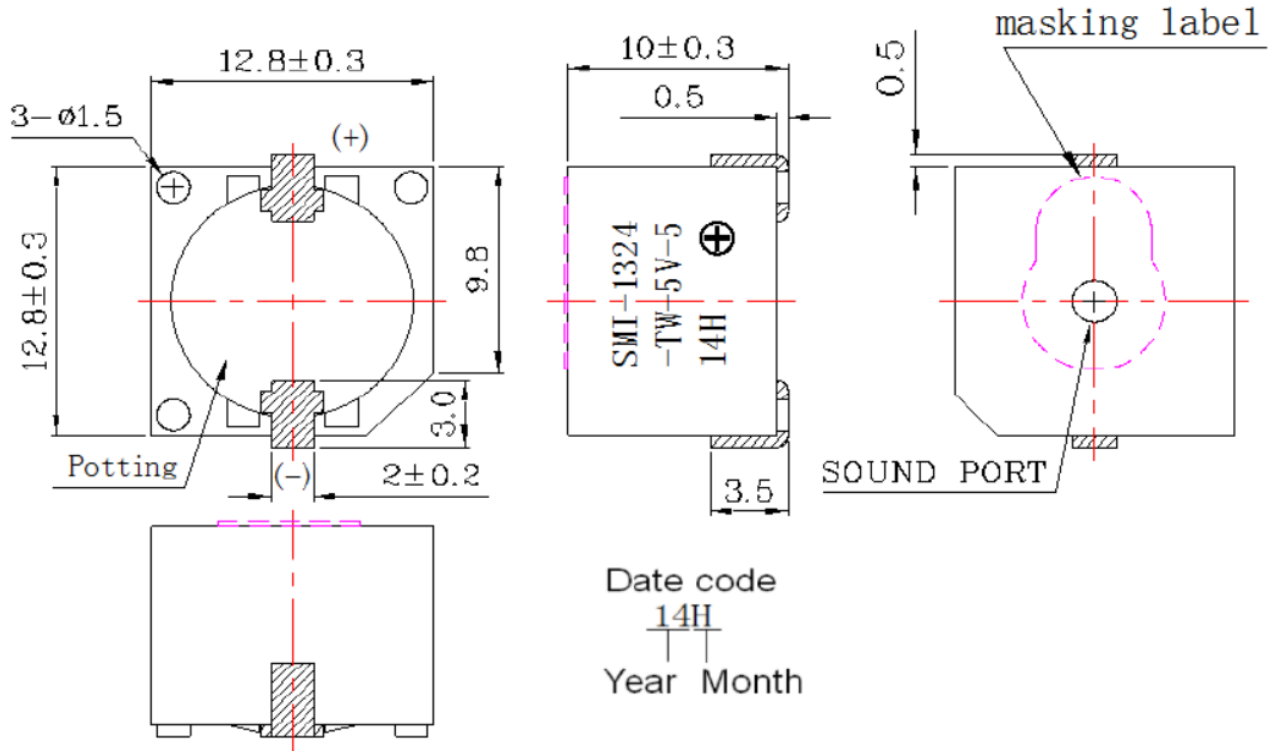
***Manual Soldering with iron temperature 350C for 2-3 seconds per terminal.**

Reliability Testing

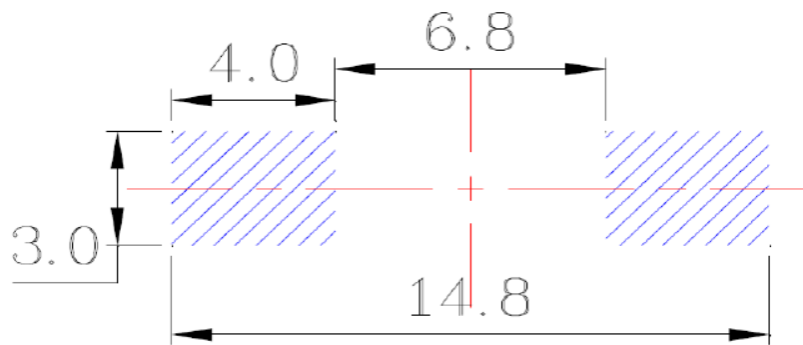
Type of Test	Test Specifications
High Temperature Test	96 hours at 80°C. Rest for 2 hours at room temperature before retesting.
Low Temperature Test	96 hours at -30°C. Rest for 2 hours at room temperature before retesting.
Humidity Test	96 hours at 40°C with relative humidity at 90-95%. Rest at room temperature for 2 hours before retesting.
Temperature Cycle Testing	 <p>The diagram shows a temperature cycle profile over a 3-hour period. It starts at -30°C for 0.5 hours, then ramps up to +25°C in 0.5 hours, holds at +25°C for 0.25 hours, ramps up to +70°C in 0.5 hours, holds at +70°C for 0.5 hours, ramps down to +25°C in 0.5 hours, holds at +25°C for 0.25 hours, and finally ramps down to room temperature in 0.25 hours. A bracket below the x-axis indicates the total duration is 3 hours.</p> <p>5 cycles of the above test.</p>
Vibration Test	Apply amplitude of 1.5mm with 10-55Hz in each XYZ direction for 2 hours.
Drop Test	Drop onto wooden board 4cm thick in any direction for 6 times, at height of 75cm.

After tests, part shall be within ±10dB.

Dimensions

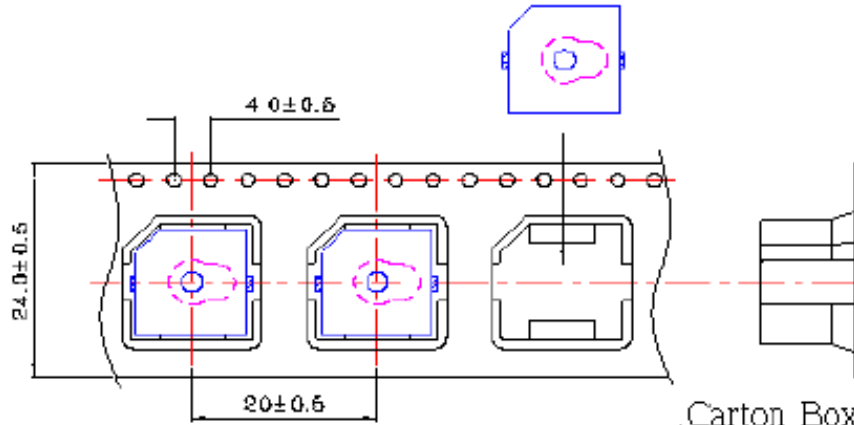
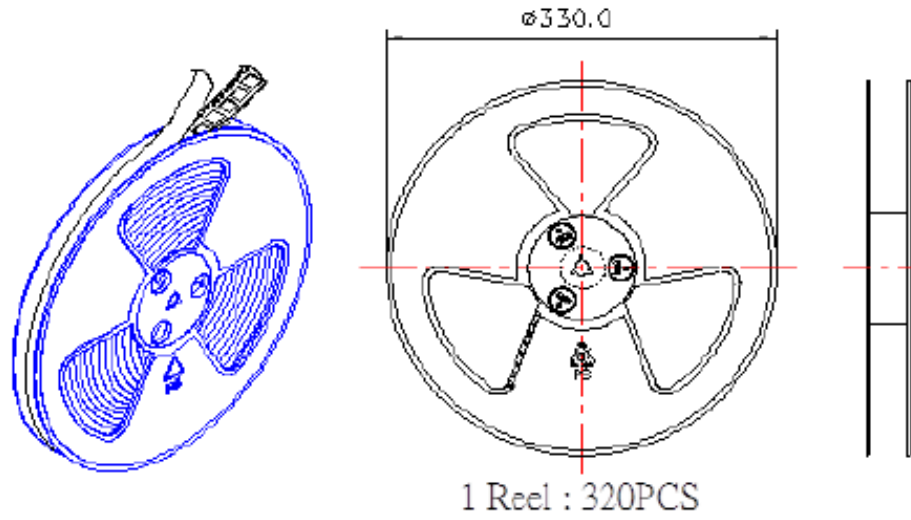


Suggested Land Pattern*

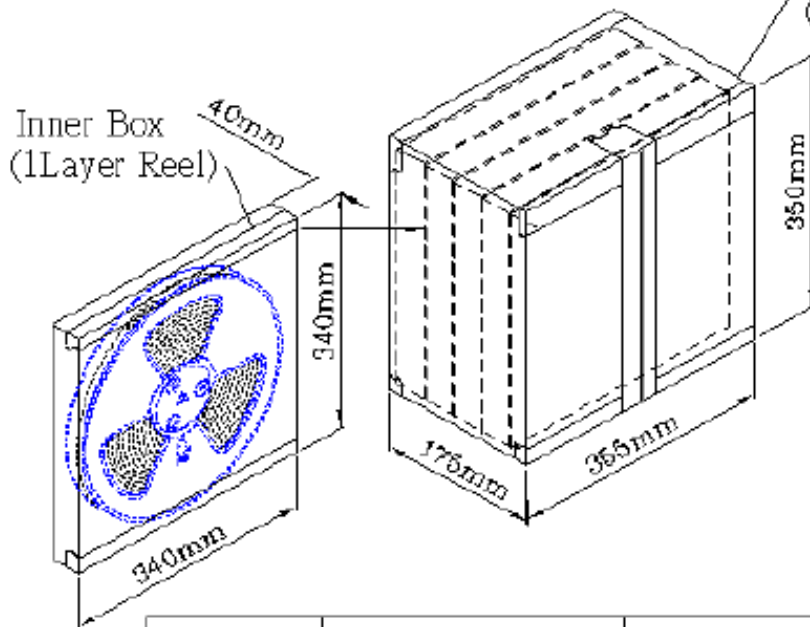


*This land pattern is advisory only and its use or adaptation is entirely voluntary. PUI Audio disclaims all liability of any kind associated with the use, application, or adaptation of this land pattern.

Packaging



Carton Box
(5 Inner Box)



Inner Box	340mmx340mmx40mm	1x320PCS=320PCS
Carton Box	350mmx355mmx175mm	5x320PCS=1,600PCS

Specifications Revisions

Revision	Description	Date	Approved
-	Released from Engineering	08/05/2014	-
A	Revised Terminal Dimension	02/28/2020	MV
B	Update Spec Format, Add details for Reliability, Packaging, MSL, etc.	09/04/2024	ML

Note:

- Unless otherwise specified:
 - All dimensions are in millimeters.
 - Default tolerances are $\pm 0.5\text{mm}$ and angles are $\pm 3^\circ$.
- Specifications subject to change or withdrawal without notice.