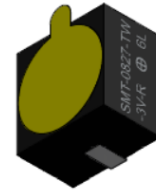




PUI audio



Data Sheet

SMT-0827-TW-3V-R

Features:

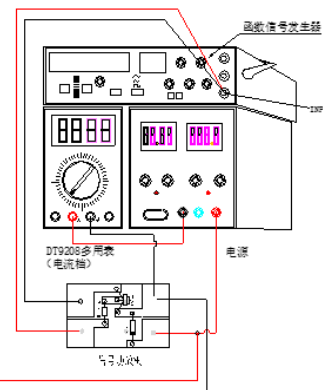
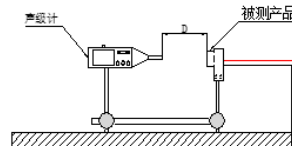
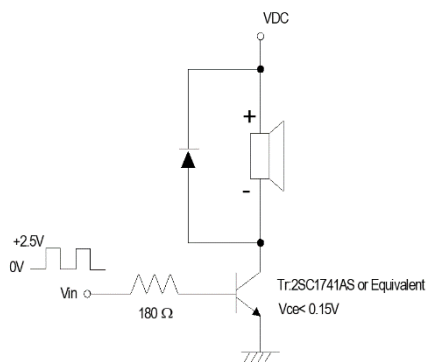
- Reflow and Washing Allowed
- 3.6Vpk, 2730Hz

Specifications

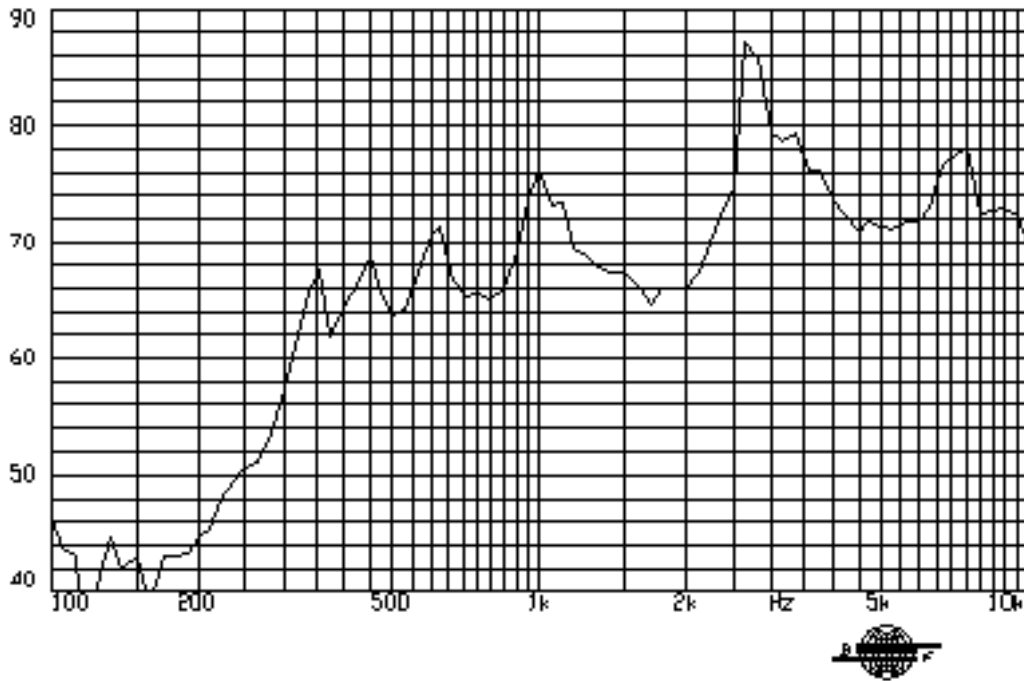
Parameters	Values	Units
Rated Voltage	3.6	V0-p
Operating Voltage Range	2 ~ 5	V0-p
Current Draw at Rated Voltage	70	mA
Coil Resistance	15 ± 3	Ohms
Minimum SPL @ 10cm	85	dBA
Resonant Frequency	2730 ± 500	Hz
Housing Material	LCP	-
Terminal Material	Sn Plated Brass	-
Moisture Sensitivity Level (MSL)	2A	-
Weight	2.0	Grams
Acceptable Soldering Methods	Manual/Reflow	See Details
Environmental Compliances	RoHS/REACH	-
Storage Temperature	-50 ~ +95	°C
Operating Temperature	-40 ~ +85	°C

Measurement Method (Temperature: 25±3°C; Relative Humidity: 60% ~ 70%)

Standard Test Fixture (Distance: 10cm, 3.6Vpk, 2730 Hz square wave)



Typical Frequency Response (3.6Vpk, 10cm)

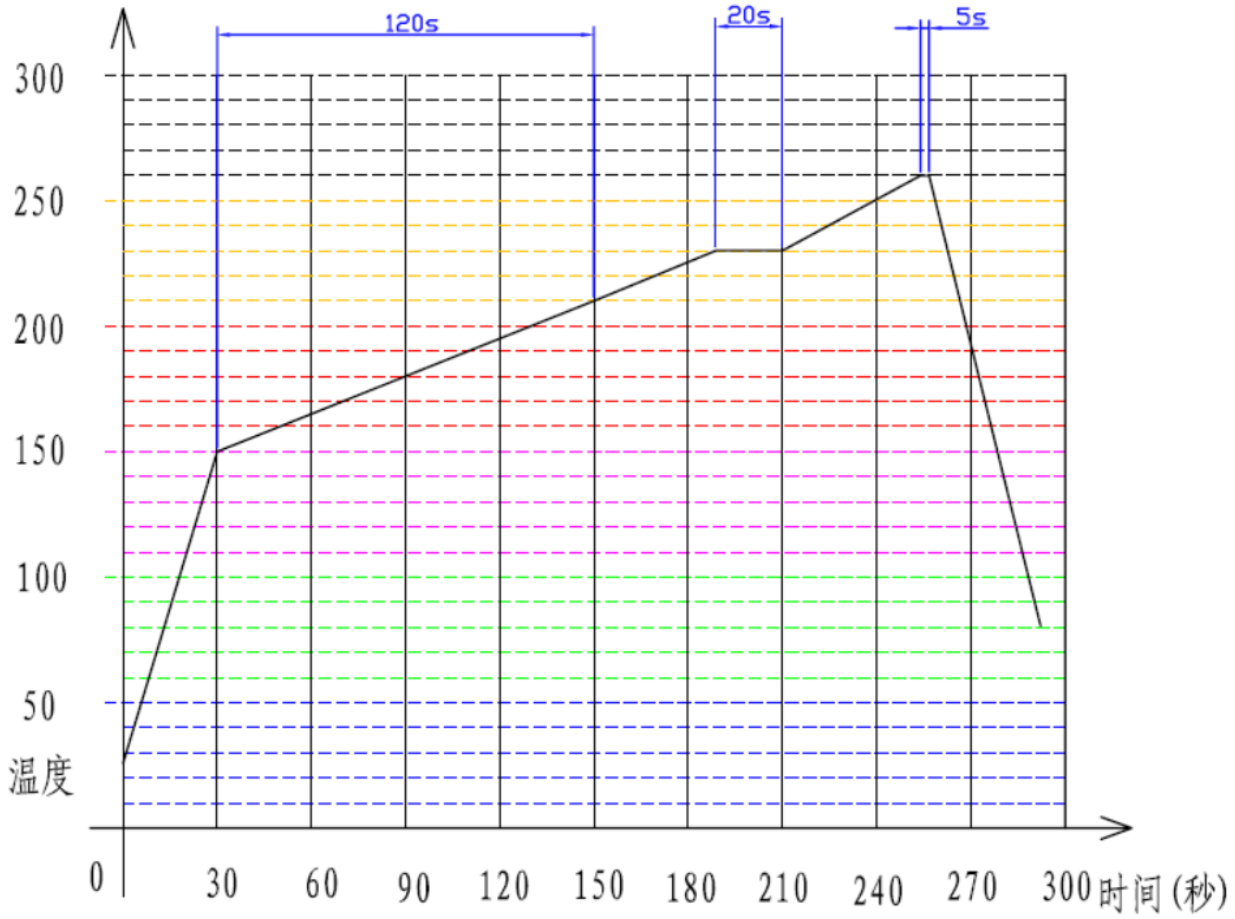


Reliability Testing

Type of Test	Test Specifications
High Temperature Test	96 hours at 95°C without applying power. Expose for 2 hours at room temp.
Low Temperature Test	96 hours at -50°C without applying power.
Humidity Test	96 hours at 40°C with relative humidity at 90-95% without applying power. Expose for 2 hours at room temp.
Temperature Cycle Testing	Test 5 cycles as shown below.
Vibration Test	<p>Apply in each X,Y,Z direction for 2 hours each.</p>
Drop Test	Free drop from 100cm height to 10mm thick board in X,Y,Z direction.

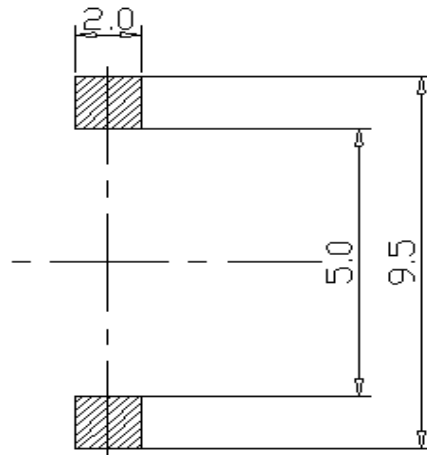
After tests, part shall measure within ± 5 dB.

Suggested Reflow



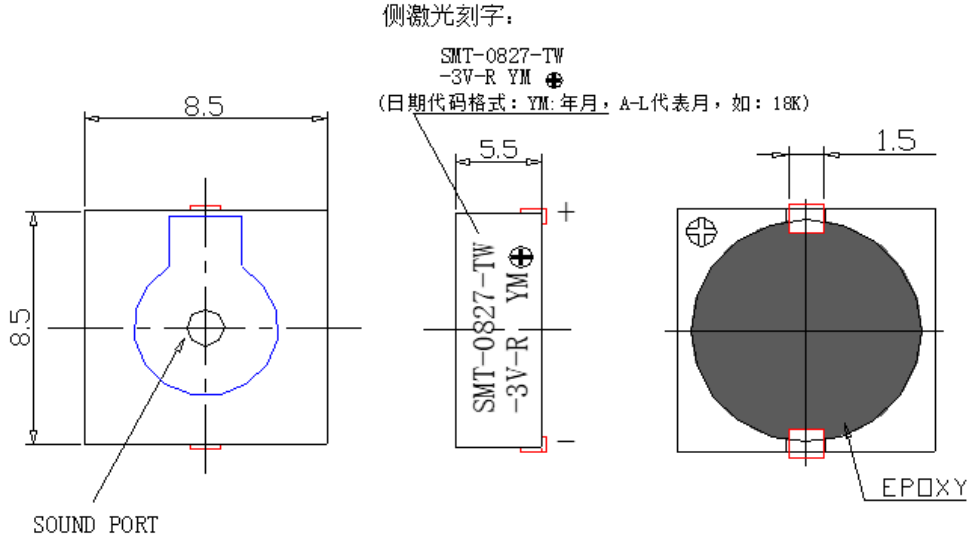
***Manual soldering with 350C iron temp and 2-3 seconds solder time per terminal.**

Recommended Land Pattern

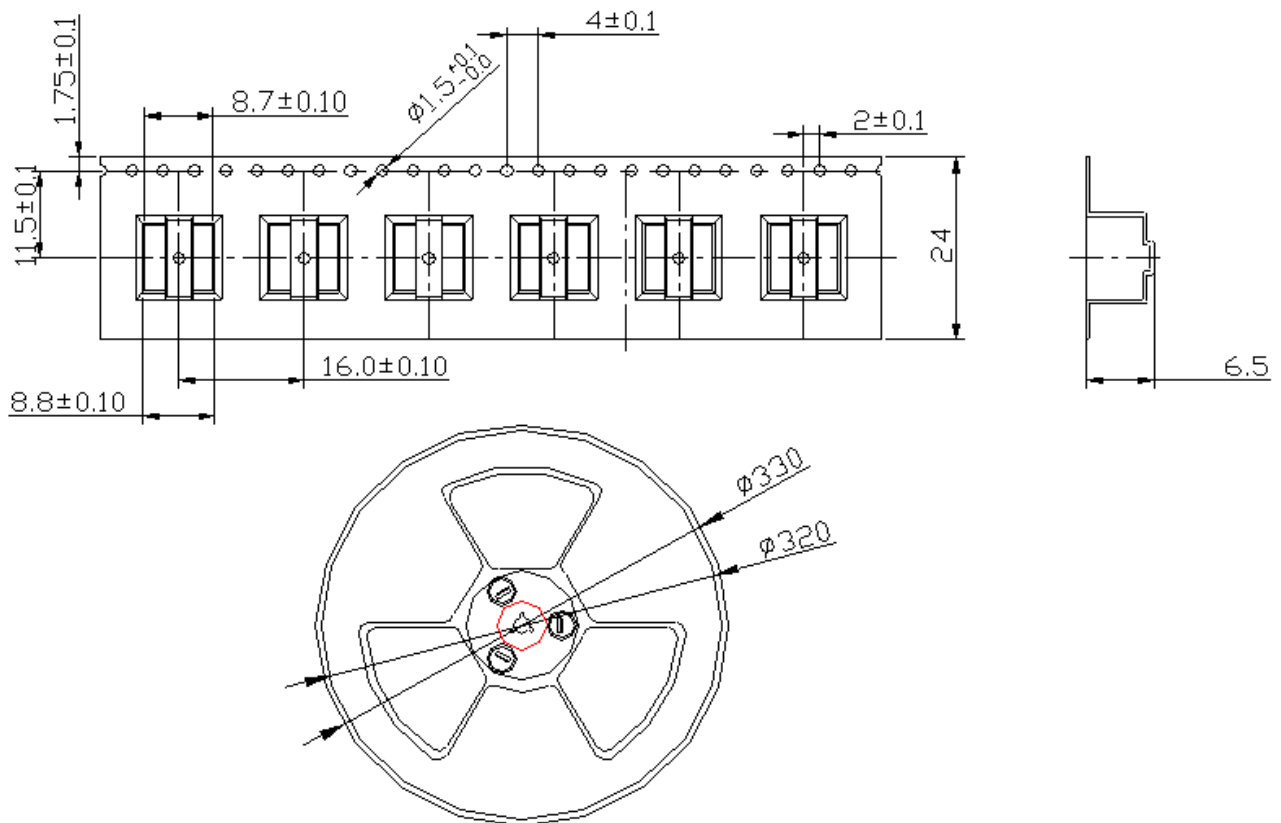


REFLOW PATTERN

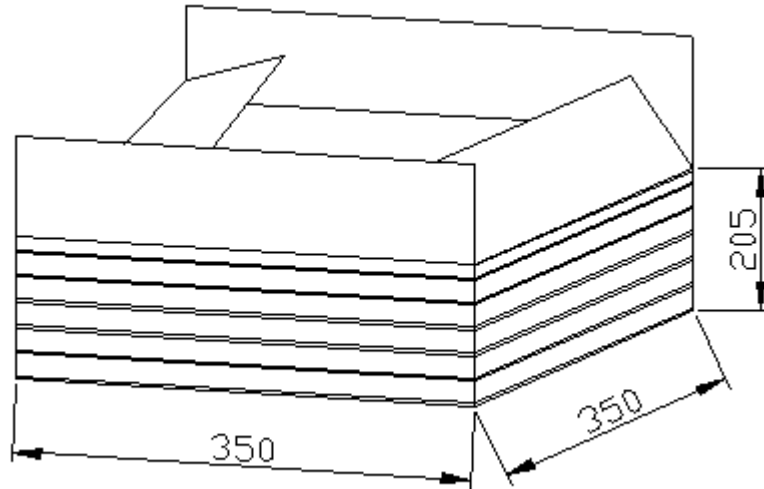
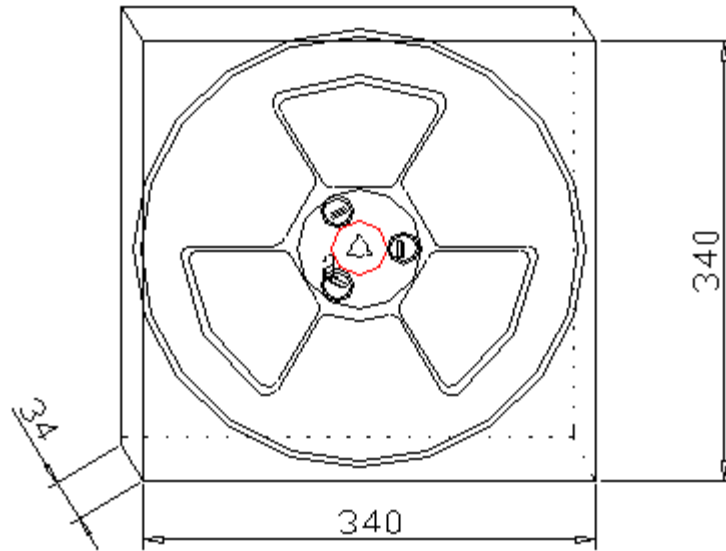
Dimensions



Packaging



每盘装: 600PCS



3000pcs Master Carton

Specifications Revisions

Revision	Description	Date	Approved
-	RELEASED FROM ENGINEERING	03/29/2007	-
A	Revised to Inventor 3D Template	11/05/2007	
B	Add details for MSL and Land Pattern, Correct Measurement Method on Graphic	09/11/2024	ML

Note:

1. Unless otherwise specified:
 - A. All dimensions are in millimeters.
 - B. Default tolerances are $\pm 0.5\text{mm}$ and angles are $\pm 3^\circ$.
2. Specifications subject to change or withdrawal without notice.